



In this issue...

[Winter Golf Clinics](#)

[Come Enjoy the Golf Expo](#)

[Sponsorship Needs YOU!](#)

[Volunteers Make the Day](#)

[2010 Golf Events](#)

[Inaugural EWGA Match Play Championship Cup](#)

[Your Opinion Matters](#)

[Have You Renewed Your Membership?...](#)

[Save The Date: Spring Kick-Off Luncheon - Saturday March 13, 2010](#)

[Upcoming Events](#)

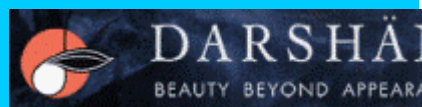
[Your 2010 EWGADC Board](#)

Our Sponsors

Ace Level Sponsors



[Capital City Golf School](#)



EWGA DC METRO CHAPTER

January 13, 2010

Dear Paula,

Okay, right now the golf courses around here are just digging out from the December snowstorm, so golfing in the DC area is more of a dream and less of a reality. But that doesn't mean there aren't ways to indulge your golf addiction. There are golf clinics this month and in February to improve your skills and the Golf Show in early February to get you equipped for more favorable golfing weather. And to whet your appetite for spring and summer, check out some of the golf events planned for this year. Hope you take advantage of these winter activities to satisfy your golf craving.

Regards!

EWGADC Communications

Winter Golf Clinics

Have you been thinking about working on your golf game over the winter and/or are you determined to correct aspects of your game before next season but can't afford Florida? If so, EWGA and GolfTEC, one of our chapter sponsors and education partners, has the solution. We've teamed up with GolfTEC, an indoor golf improvement facility, to host a series of Sunday afternoon (4:30 -6:00pm) golf clinics addressing some of the most persistent golf problems:

- Why your shots don't go high; why you hit your 3-wood and driver the same distance (**January 17th**)
- Divots - yes/no??, where/when?? (**January 31st**)
- Floppy wrists & how they affect your swing; club fitting/hand-me-down clubs (**February 7th**)
- Making the short putt (**February 21st**)

Clinics will be held at GolfTEC, located in the Arlington Sport and Health Club at 1122 Kirkwood Road, Arlington, VA. Register directly with GolfTEC. Registration is \$20 and light refreshments will be served.

Clinics are limited to 8 people so don't delay in signing up. To sign up call **GolfTEC** at **703-894-3120**.

Darshan



Waggle Golf Pass



Wood Smith Associates

MSW Interactive Designs LLC



We put the Web to Work!

MSW Interactive Designs



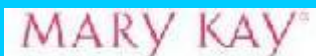
Reynolds Plantation



Active Bodyworks



Waggle.com



Mary Kay

Come Enjoy the Golf Expo

February 5 - 7, 2010

The popular Greater Washington Golf Show is back from February 5 -7 at the Dulles Expo Center in Chantilly, VA. If you have not attended before, it's a fun thing to do in dreary, snowy February. The Expo offers great shopping for discounted golf merchandise and services, hands-on golf lessons and contests and more. The show is open on Friday from 2pm-8pm; Saturday from 10am-6pm; Sunday from 10am-4pm. For more info on Show logistics, go to http://www.northcoastgolfshows.com/washington/cns_washington.html

Like last year, we are sharing an exhibit booth with one of our Chapter Sponsors -- GolfDC and the Capital City Golf School -- who will be highlighting new golfer programs, women's golf and EWGA-DC! We'd like to send a BIG thank you in advance to the 20+ EWGA-DC members who have offered to help "wo-man" our booth. And to those volunteers on the "wait list" due to all volunteer shifts being filled (!), we are very grateful for your support and hope we can accommodate your volunteer spirit at future events, like our Kickoff luncheon.

Whether you're a new member or a veteran, we hope you come enjoy this fun venue and look for us at **Booth #231/#233** to say hello to the members who are giving their time and talents.

See you in February!

Sponsorship Needs YOU!

As an integral part of the EWGA DC Chapter, SPONSORSHIP plays a vital role in the success of our local organization. SPONSORSHIP is what subsidizes the different golf events throughout the year and also helps to provide for the promotional material received at the golfing events. With the money earned from our sponsors, the DC Chapter can then pass on the savings to our members by lowering the costs for playing the different events throughout our area. Sponsorship proceeds also allow donations to be made to LPGA-USGA Girls Golf and Rally for the Cure. So, please help the DC Chapter by securing new sponsors for our chapter.

Do you know someone who would like to advertise their products or services to 550 Washington-area executive women who love to play golf? Perhaps you may have a friend who would like to broaden her clientele by reaching out to our membership. We will be providing incentives to our members to help the SPONSORSHIP Committee secure new sponsors. The re-tooled Member-Get-A-Sponsor program is in its final stages and information will be forthcoming. Meanwhile, pass along any contact information you may have to the SPONSORSHIP Committee at sponsorship@ewgadc.org so that we can contact the potential sponsor with the membership information. We are trying to secure new sponsors prior to the KICKOFF Luncheon in March, so your help is essential. If you should have any questions, please feel free to contact either Allison Linnell or Leslie LaPlace, Co-Chairs of the SPONSORSHIP Committee.



[Someday Vacations](#)



[East Potomac](#)

Eagle Level Sponsors



[Tee Times Pass](#)



[Nike Golf](#)



[Boss Lady Bags](#)



[Callaway Golf](#)

Volunteers Make the Day

EWGADC events are made possible by the many volunteers who step up and share their time and talents to make golf outings run smoothly, enjoyable and attendees eager to play again.

Last year nearly 100 women assisted in weekend events, league play by registering golfers, assisting with planning, spotting, hosting luncheons and so on. That is 1 /5th of our chapter membership - OUTSTANDING!!!

This year volunteers will again be needed to keep the chapter events great experiences. Please contact Nancy Burke at leadership@ewgadc.org for questions or information.

2010 Golf Events

Mark your calendars for April 17 for our Kick-Off Member-Guest Event at Algonkian Golf Course in Sterling, VA. We plan an 8:30 am Shotgun Start at this lovely parkside setting near the Potomac River. Bring a couple of friends to introduce them to our Chapter. We promise a good time for all. If you miss the Kick-off Member-Guest, mark your calendar for our Mid-Season Member-Guest at Cross Creek Golf Course in Beltsville, MD on July 24.

We've received input from lots of members to speed up the pace of play, keep prices reasonable, vary the types of events, and keep it fun for all and competitive for those who want to play competitively. We hope each of you will find what you're looking for.

We'll have several 9-hole, as well as 18-hole events. We're also going to try an event with modified Stableford scoring, which is a stroke play event where the high score wins-based on points earned for your scores on each individual hole. For example, a bogey might be worth 1 point, a par 2, and a birdie 3. If you par the first hole and bogey the second, you've accrued 3 points.

Never played a weekend event? You're missing out on a good time. We encourage you to try playing at least one this year. It doesn't matter if your handicap is 12 or 42. You can choose to play against other players (Tournament Tour) or casually (non-Tour). Either way, it's lots of fun.

We've also booked events at Northwest Park (May 1 in Wheaton, MD) and Pender Brook (August 28 in Fairfax, VA). We're in negotiations with Shenandoah, Links of Challedon, Bull Run, Goose Creek, University of Maryland, Hampshire Greens, and Falls Road, among others.

Here's looking forward to warm weather and getting back out on the links!

Inaugural EWGA Match Play Championship Cup

July 31 - August 1, 2010

The Long Island (NY) Chapter is organizing the first ever Northeastern Area Match Play Event. It will be held at Crystal Springs Golf Resort (Black Bear and Ballyowen courses) in northern New Jersey on July



[GolfTec](http://www.golftec.com)



[Maples Golf Packages](http://www.MaplesGolf.com)



Charlie Buxton and Kathy Chambers
LPGA Teaching Professionals



www.afcreston.com

31-August 1. There will be three rounds of golf (36 holes Saturday, 18 holes Sunday). The event is designed to be a competitive tournament and draw from each chapter's lowest handicap and most competitive golfers. It is limited to those with handicaps of 25 or less. Karen Sroka will be heading up the DC Chapter team.

This regional competitive event is being used by EWGA as a pilot program to roll out on the national level in 2011. The "Vision" is to have the EWGA National Match Play Championship in addition to the current EWGA National Championship.

This event will be in addition to the Battle of the Beltways with the Baltimore Chapter (tentatively scheduled for August 7-8). We'll have more information on the Battle of the Beltways in the next newsletter.

Your Opinion Matters

Your chapter board members are working on a range of events for the 2010 golf season. We'd like these events to reflect the interests of our members particularly in the area of golf education. In the coming weeks you'll receive an invitation to complete a survey designed to better help us plan events. Please take the time to complete the survey. The more feedback we have, the better able we are to plan the types of events in which you are interested.

Have You Renewed Your Membership?

As golf winds down for many and other activities fill the calendar, you might have forgotten to renew your membership. You need not wait for a reminder from the EWGA Home Office in Florida to renew online.

Save the Date: Spring Kick-Off Luncheon

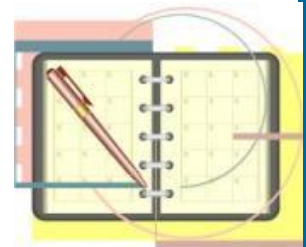
Saturday, March 13, 2010

This launches the 2010 golf season and is the first chance to sign-up for 2010 league play. Mark your calendars for what is the largest gathering of our 500+ membership. Watch upcoming E-Blasts to see how you can get involved in the planning. The more hands involved, the merrier. Last year we had more than 220 registrants. Let's see if we can beat this figure.

Upcoming Events

Be sure to add the dates below to your calendar. [Click here](#) for latest events.

- Jan 17: Golf Clinic, GolfTEC, Arlington, VA
- Jan 21: Board Meeting 6 - 8 PM, La Madeleine Restaurant, Tyson's Corner, VA
- Jan 31: Golf Clinic, GolfTEC, Arlington, VA
- Feb 5 - 7: Golf Expo, Dulles Expo Center
- Feb 7: Golf Clinic, GolfTEC, Arlington, VA
- Feb 21: Golf Clinic, GolfTEC, Arlington, VA
- March 13: Spring Kick-Off, Marriott Conference Center, Bethesda, MD
- April 17: Kick-Off Member-Guest Event, Algonkian GC, Sterling, VA



- May 1: Northwest Park GC, Wheaton, MD
- May 22: Play Golf America Day in DC
- June 2010: Women's Golf Month
- June 16: 6 - 8 pm Women's Golf Month Networking Reception, East Potomac Golf Course/Hains Point
- July 24: Mid-Season Member-Guest Event, Cross Creek GC, Beltsville, MD
- July 31 - Aug 1: Inaugural EWGA Match Play Championship Cup, Crystal Springs Golf Resort, New Jersey.

Your 2010 EWGADC Board

Office/E-mail	Officer
President president@ewgadc.org	Catherine Perge
Vice President vp@ewgadc.org	Cathy Johnson
Secretary secretary@ewgadc.org	Susan Lamar
Treasurer treasurer@ewgadc.org	Janet Montague
Membership membership@ewgadc.org	Jeanne Tirado
Education and Golf Development education@ewgadc.org	Chris O'Donnell
Leadership leadership@ewgadc.org	Nancy Burke
Social social@ewgadc.org	Virginia Vaillancourt -Shro
Communications/E-Blast communications@ewgadc.org	Paula Renfro
Sponsorship sponsorship@ewgadc.org	Allison Linnell Leslie LaPlace
Leagues leagues@ewgadc.org	Trish McKenzie
Handicap Chair handicap@ewgadc.org	Kimberly Korbel
Golf Events events@ewgadc.org	Sue Madden
Tour Commander tour@ewgadc.org	Jennifer Flather
Chapter Championship Director championship@ewgadc.org	Stacy Breslin

Opportunities

[2009 Sponsorship Program](#)

OUR MISSION: The EWGA's mission is connecting women to learn, play and enjoy golf for business and for fun.

email: communications@ewgadc.org

web: <http://www.ewgadc.org>